

Can Seam Micrometers

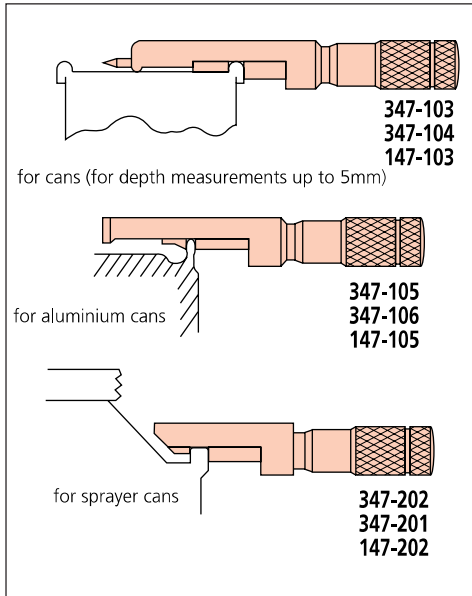
SERIES 347, 147



147-103



147-202



SPECIFICATIONS

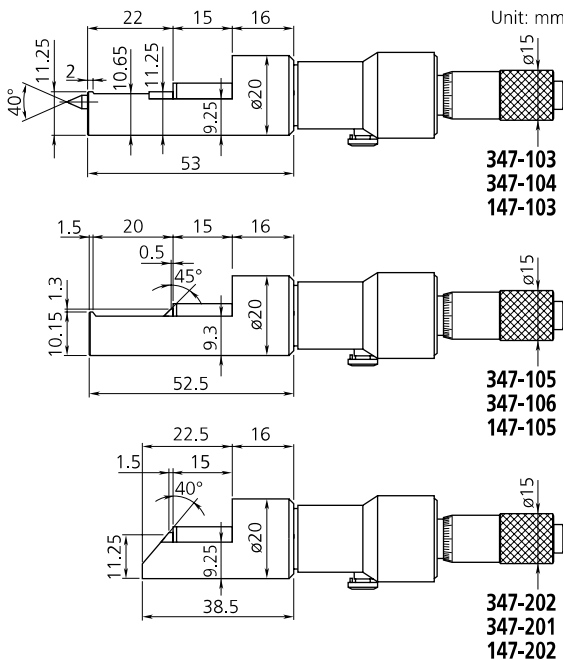
Metric	Digital model	Range	Order No.	Resolution	Remarks
		0 - 13mm	347-103	0.001mm	for steel cans
			347-105	0.001mm	for aluminum cans
			347-202	0.001mm	for sprayer cans

Inch/Metric	Digital model	Range	Order No.	Resolution	Remarks
		0 - .5"	347-104	.00005"/0.001mm	for steel cans
			347-106	.00005"/0.001mm	for aluminum cans
			347-201	.00005"/0.001mm	for sprayer cans

FEATURES

- Measures the width, height, and depth of can seams.
- Three types of micrometers are available for : steel cans, aluminum cans, and sprayer cans.

Dimensions



Metric	Range	Order No.	Graduation	Remarks
	0 - 13mm	147-103	0.01mm	for steel cans
		147-105	0.01mm	for aluminum cans
		147-202	0.01mm	for sprayer cans

Inch	Range	Order No.	Graduation	Remarks
	0 - .5"	147-104	.001"	for steel cans
		147-106	.001"	for aluminum cans
		147-201	.001"	for sprayer cans

Accuracy

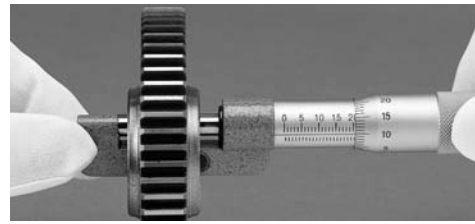
- $\pm 3\mu\text{m}$ ($\pm .00015"$)
Excluding quantizing error. (347 series)

Hub Micrometers

SERIES 147



147-301



FEATURES

- Measures hub thickness and shoulders inside a bore.
- Carbide-tipped measuring faces.
- With Ratchet Stop for constant force.
- Provided with a standard except for 25mm (1") model.

SPECIFICATIONS

Metric

Range	Order No.	Graduation	Accuracy
0 - 25mm	147-301	0.01mm	±2µm
25 - 50mm	147-302	0.01mm	±2µm
50 - 75mm	147-303	0.01mm	±2µm
75 - 100mm	147-304	0.01mm	±3µm

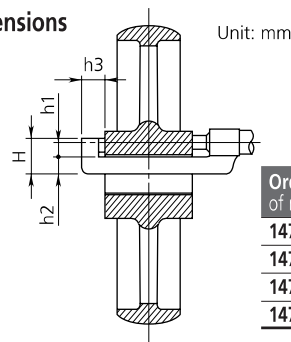
Inch

Range	Order No.	Graduation	Accuracy
0 - 1"	147-351	.001"	±.0001"
1" - 2"	147-352	.001"	±.0001"
2" - 3"	147-353	.001"	±.0001"
3" - 4"	147-354	.001"	±.00015"

Measuring faces

- Flatness: 0.6µm (.000024")
 - Parallelism: $(2+L/100)\mu\text{m} [(.00008+.00004 (L/4))"]^*$
- *L=Maximum measuring length (mm) [(inch)], Fraction rounded up

Dimensions



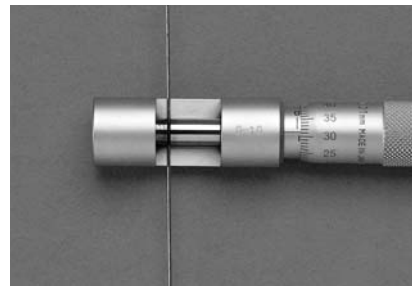
Order No. of micrometer	h1	h2	h3	H
147-301	6	8.5	13.5	17.5
147-302	6.5	11	14	20.5
147-303	6.5	11	13	20.5
147-304	6.5	11	13	20.5

Wire Micrometers

SERIES 147



147-401



FEATURES

- Designed for measuring wire thickness.
- Also used to measure the diameter of a small ball.
- Carbide-tipped measuring faces

SPECIFICATIONS

Metric

Range	Order No.	Graduation	Accuracy
0 - 10mm	147-401	0.01mm	±3µm

Inch

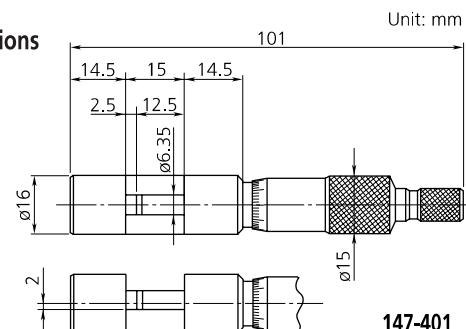
Range	Order No.	Graduation	Accuracy
0 - .4"	147-402	.0001"	±.00015"

Note: .0001" reading is obtained with vernier.

Measuring faces

- Flatness: 0.6µm (.000024")
- Parallelism: 1.3µm (.00006")

Dimensions



147-401

